

Sonus Centralized Policy Server

The Sonus PSX delivers the call routing and session policy management for Sonus' industry-leading session border controller, media gateway and Class 5 access solutions. PSX's unique master/replica softswitch architecture provides a single, central point of provisioning for all routing and policy in either a service provider or enterprise network, greatly simplifying network management while offering unmatched scalability.

Supporting a wide variety of signaling standards, the PSX server can also be deployed in heterogeneous networks as a centralized call routing engine using SIP Proxy Server, SIP Redirect Server, H.323 Proxy Gatekeeper, and ENUM Server capabilities. It also functions as the Border Gateway Control Function (BGCF) in IMS networks.

System Capabilities

- Policy Lookup with an external ENUM dip: 4,500 cps
- Policy Lookup with an external TCAP dip: 2,000 cps
- SIP Proxy: 2,700 cps
- SIP Redirect: 5,000 cps

Routing Engine Protocols

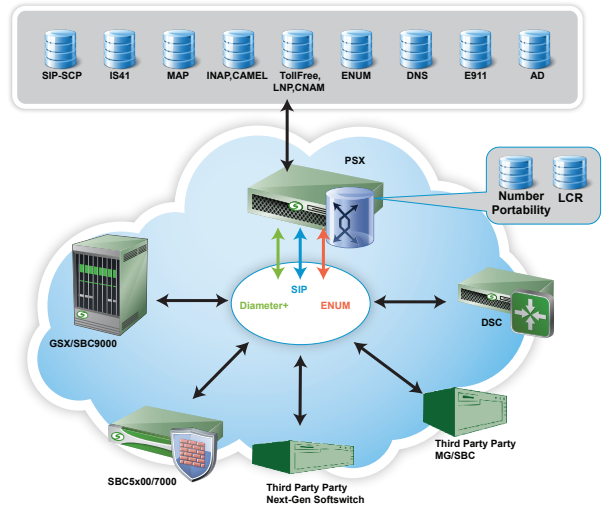
- Diameter+
- SIP Redirect
- SIP Proxy
- ENUM
- H.323

Transport Protocol Support

- Diameter+ over UDP
- SIP over UDP
- SIP over TCP
- SIP over SCTP
- ENUM over UDP
- H.323 over UDP
- IPv4
- IPv6

SCP Signaling Protocols

- TCAP (ANSI & ITU) over SIGTRAN (SUA/SCTP)
- INAP CS2
- AIN 0.2
- IN (Toll-Free and CNAM)
- GSM-MAP/CAMEL
- IS41
- SIP
- ENUM
- DNS



Translation Services

- Address of Record
- Calling Name
- Local Number Portability
- Wireless Number Portability
- Toll Free

Routing Configurations

- Calling party category routing
- Carrier cut through routing
- Casual call routing
- Codec based routing
- Direct-dial routing
- Emergency routing
- Fallback routing
- Generic number routing
- International routing
- Leading digit routing
- Least cost routing
- Nested routing labels
- Operator Services and Directory Assistance
- Origination entity routing
- Overflow ReRoute
- Percentage allocation routing
- Round robin routing
- Private call routing
- Private number routing
- Route hopping
- Routing to announcements
- Temporary alternate routing
- Time of Day/Time Zone and Day of Week routing
- Transmission Medium Requirements routing
- Trunk group prioritization routing

Services

- Blocking (white, grey, blacklisting)
- Screening
- Authcode
- Custom scripts
- SAC/ Non-SAC routing
- Forced routing
- Toll bypass
- Voice VPNs
- Digit Manipulation
- Parameter Manipulation
- Customizable service logic

Voice Services

- Auto Recall
- Business groups
- Conference and transfer
- Message waiting indication
- Service exception profiles
- Take back and transfer

Number Portability Server

- Multi-Protocol Support
 - ENUM
 - SIP
 - SS7
- Multi-Protocol Support
 - Local DB
 - External ENUM
 - External TCAP
 - External SIP
- Multi-country signaling support
- SIP-IX based LSMS in the North American market
- Direct feed support in India
- File-based input in other countries

BGCF Functionality

- 3GPP Release 9 TS 24.229 compliance
- Mi interface toward S-CSCF
- Mj interface toward MGCF
- Mk interface toward peer BGCF
- Mx interface toward peer IBCF

Overload Controls

- Adaptive Congestion Control Feedback
- Automatic Code gapping
- CAMEL Call Gapping
- CANF
- CANT
- Code Control
- Immediate ReRoute (IRR)
- Overflow Reroute (ORR)
- SKIP
- SprayIRR
- SprayORR
- Temporary Alternate Routing

High Availability and Reliability

- 99.999% availability
- Geo-redundancy
- N+1 master replica architecture
- Live data migration
- Shadow database
- Test database

Regulatory Services

- Lawful Intercept
- Enhanced 911 - NENA i2
- Wireless Priority Service (WPS)
- Government Emergency Telecommunications Service (GETS)
- Japan Emergency Call Services (ECS)
- Hosted Emergency Database (German market)

Hardware Specifications

- HP DL380 G8 carrier grade, NEBS compliant server
- 2 RU
- Dimensions: (H x W x D) 3.38 x 17.54 x 27.25 in (8.59 x 44.55 x 69.22 cm)
- Weight: Maximum 60.00 lbs (27.27kg)
- Optionally requires External Storage (For High Availability).

Note: Please contact your sales or channel contact to get the exact specifications.

Database Management System

- Oracle 11.2.0.1EE

Operating System

- Red Hat Enterprise Linux 6.1

Please note that the performance results could vary significantly based on the customers' specific network scenarios

About Sonus Networks

Sonus enables and secures real-time communications so the world's leading service providers and enterprises can embrace the next generation of SIP and 4G/LTE solutions including, VoIP, video, instant messaging, and online collaboration. With customers in more than 50 countries and nearly two decades of experience, Sonus offers a complete portfolio of hardware-based and virtualized Session Border Controllers (SBCs), Diameter Signaling Controllers (DSCs), Cloud Exchange Networking Platform, policy/routing servers, and media and signaling gateways. For more information, visit www.sonus.net or call 1-855-GO-SONUS. Sonus is a registered trademark of Sonus Networks, Inc. All other company and product names may be trademarks of the respective companies with which they are associated.

Sonus Networks North American Headquarters

4 Technology Park Drive
Westford, MA 01886
U.S.A.
Tel: +1-855-GO-SONUS

Sonus Networks APAC Headquarters

1 Fullerton Road #02-01
One Fullerton
Singapore 049213
Singapore
Tel: +65-68325589

Sonus Networks EMEA Headquarters

Edison House
Edison Road
Dorcan, Swindon
Wiltshire
SN3 5JX
Tel: +44-14-0378-8114

Sonus Networks CALA Headquarters

Homero No. 1933-902
Col. Los Morales, C.P. 11510
Mexico City, Mexico
Distrito Federal
Mexico Tel: +52-55-1950-3036
Int'l Tel: +1-978-614-8741

To learn more, call Sonus at 855-GO-SONUS
or visit us online at www.sonus.net

Microsoft Partner
Gold Communications

Voice
Unified Communications
Business Productivity Solutions
Midmarket Solution Provider

The content in this document is for informational purposes only and is subject to change by Sonus Networks without notice. While reasonable efforts have been made in the preparation of this publication to assure its accuracy, Sonus Networks assumes no liability resulting from technical or editorial errors or omissions, or for any damages resulting from the use of this information. Unless specifically included in a written agreement with Sonus Networks, Sonus Networks has no obligation to develop or deliver any future release or upgrade, or any feature, enhancement, or function.

Copyright © 2016 Sonus Networks, Inc. All rights reserved. Sonus is a registered trademark of Sonus Networks, Inc. All other trademarks, service marks, registered trademarks, or registered service marks may be the property of their respective owners.